



P R O M E T H E E  
M E T H O D S

Dynamic MCDA  
with **PROMETHEE** and **GAIA**

Bertrand Mareschal  
[www.promethee-gaia.net](http://www.promethee-gaia.net)

# Who is **PROMETHEE**?

---



# Who is **GAIA**?

---



# What is **PROMETHEE-GAIA**?

---

- ▶ Outranking methodology vs MAUT
- ▶ Ranking: **PROMETHEE**
- ▶ Descriptive: **GAIA**
- ▶ Extensive sensitivity analysis
- ▶ Visual representations
- ▶ Software: PromCalc, Decision Lab, **Visual PROMETHEE**
  
- ▶ 30 years of development
- ▶ Over 550 related scientific papers
- ▶ Ethics
- ▶ Sustainable decisions

# Not so well known features

---

- ▶ Variable thresholds – preference functions
  - ▶ Already in PromCalc
- ▶ Missing values
  - ▶ Already in Decision Lab
- ▶ Hierarchy of criteria
  - ▶ Already in Decision Lab
- ▶ GAIA 3D
  - ▶ In **Visual PROMETHEE**
- ▶ GDSS multi-scenarios model
  - ▶ Already in Decision Lab
- ▶ Bank Adviser and **PROMETHEE Sort**
  - ▶ In **Visual PROMETHEE**

# New features – **Visual PROMETHEE**

---



- ▶ **PROMETHEE** Rainbow
- ▶ Enhanced GDSS-**PROMETHEE** multi-scenarios model
- ▶ **GAIA** Webs
- ▶ PROMap GIS feature
- ▶ Visual stability intervals
- ▶ Performance analysis
- ▶ **Dynamic (time-dependent) extension**
- ▶ Assistants
- ▶ Interface
- ▶ User experience

# Dynamic **PROMETHEE-GAIA**

---

- ▶ Time dimension – Different problems
  - ▶ Dated decisions
  - ▶ Dated data
    - ▶ Individual evaluations have different ages (reliability)
    - ▶ Single multicriteria table
  - ▶ Multiperiod evaluation
    - ▶ Multicriteria data available for several time periods
    - ▶ Several multicriteria tables
- ▶ Extension of **PROMETHEE** for dated data
  - ▶ Taking time into account in preference functions
- ▶ Extension of multi-scenarios model for multiperiod evaluation

# Weighing the age of evaluations

---

- ▶ Older evaluations get a lower weight.

$\omega_t$  where  $t$  is the age of the data

- ▶ Different possible weighing schemes

- ▶ Exponential

$$\omega_t = e^{-at}$$

- ▶ Geometrical

$$\omega_t = a^t$$

- ▶ Linear

$$\omega_t = 1 - at$$

- ▶ Constant

$$\omega_t = 1$$



# PROMETHEE for Dated Data

---

- ▶ Preference function computation

$$P_j^{dd}(a, b) = \Omega(a, b)P_j(a, b)$$

where

$$\Omega(a, b) = \min(\omega(a), \omega(b))$$

or

$$\Omega(a, b) = \omega(a)\omega(b)$$

- ▶ **PROMETHEE-GAIA** analysis as usual

# PROMETHEE-GAIA

## Multiperiod Analysis

---



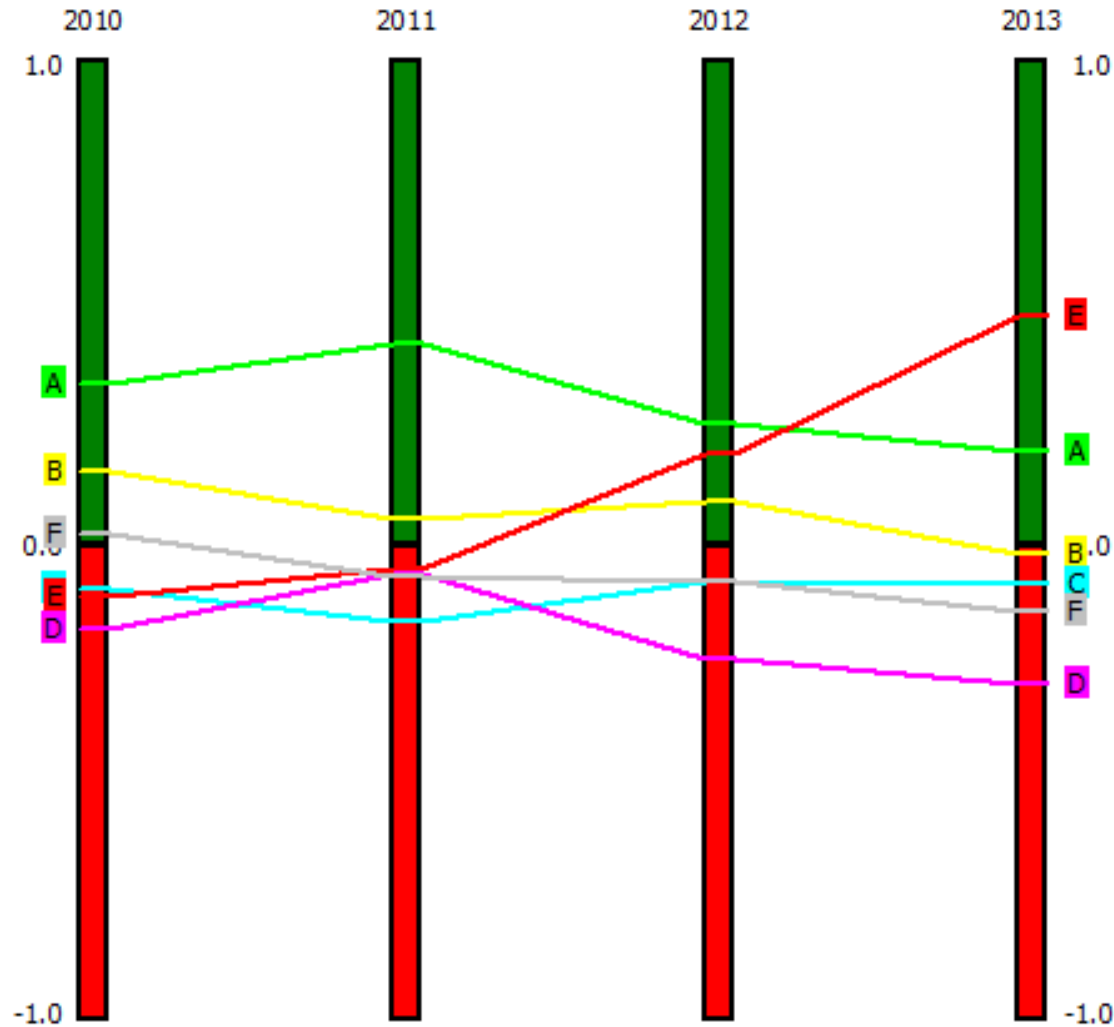
- ▶ **Multi-scenarios analysis**
  - ▶ Each period is associated to one scenario.
  - ▶ Scenarios are weighted according to age.
- ▶ Single period **PROMETHEE-GAIA** analysis
- ▶ Multiperiod **PROMETHEE** rankings
- ▶ Multiperiod **GAIA** analysis
  - ▶ Each action has a path on the **GAIA** plane

# Example

---

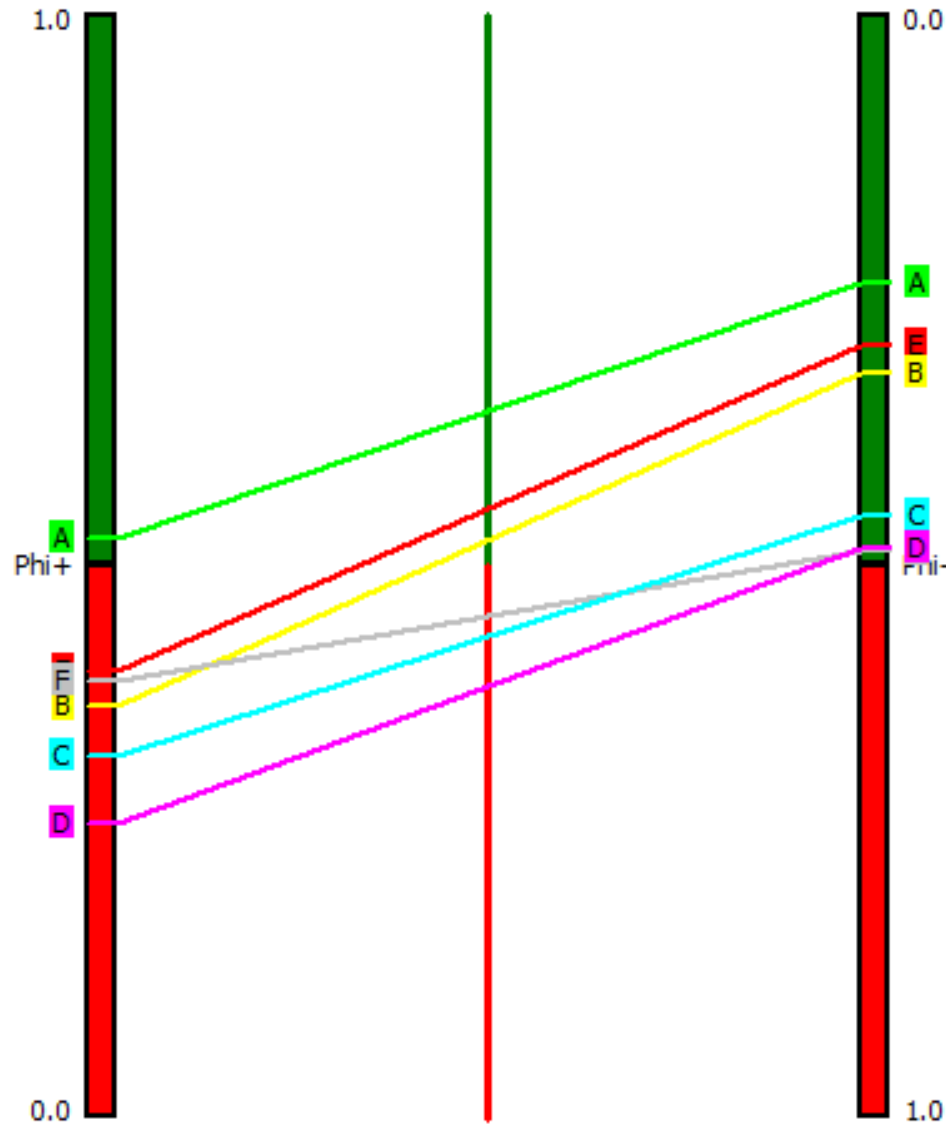
- ▶ **Multicriteria problem**
  - ▶ 6 actions: A, B, C, D, E, F
  - ▶ 4 criteria:  $g_1, g_2, g_3, g_4$
  
- ▶ **Four time periods**
  - ▶ 2013, 2012, 2011, 2010

# PROMETHEE II Ranking over time



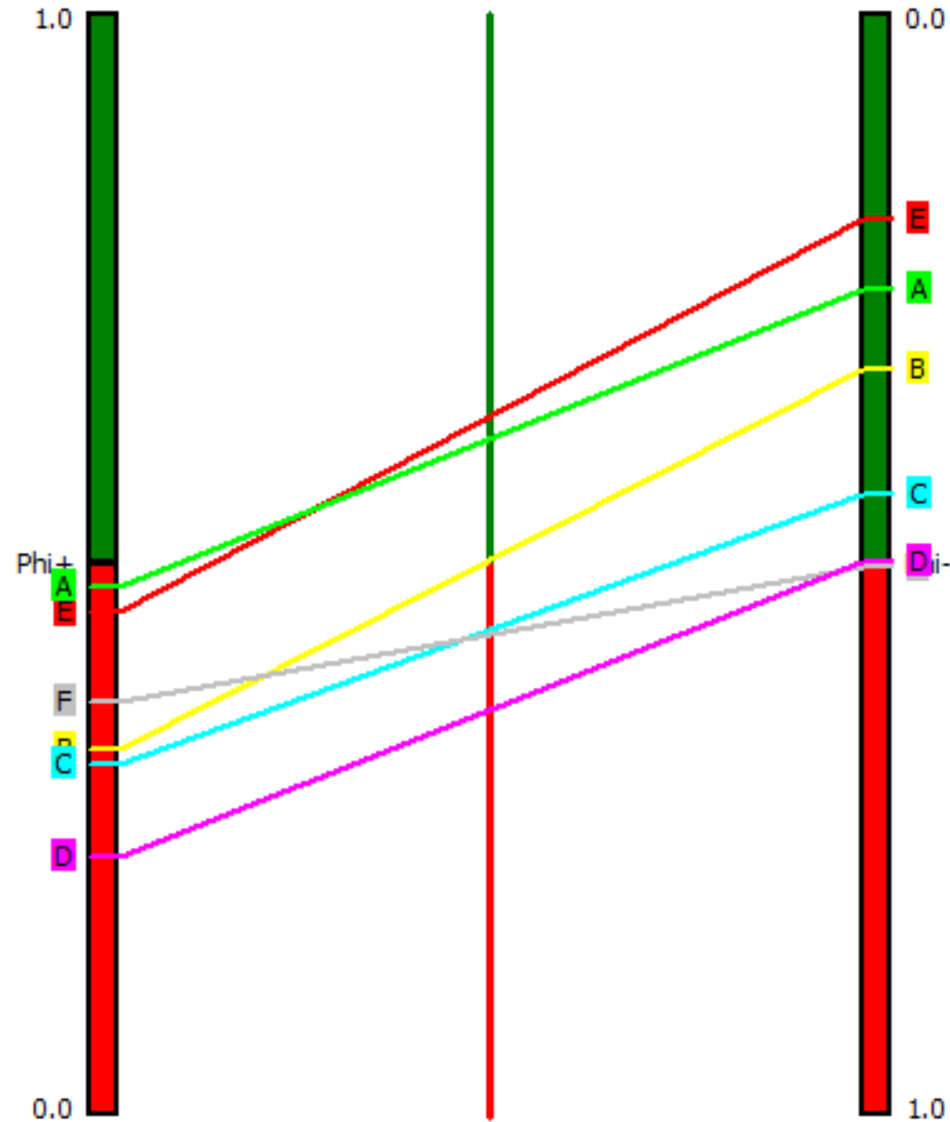
# Dynamic **PROMETHEE** Ranking

## Equal weights

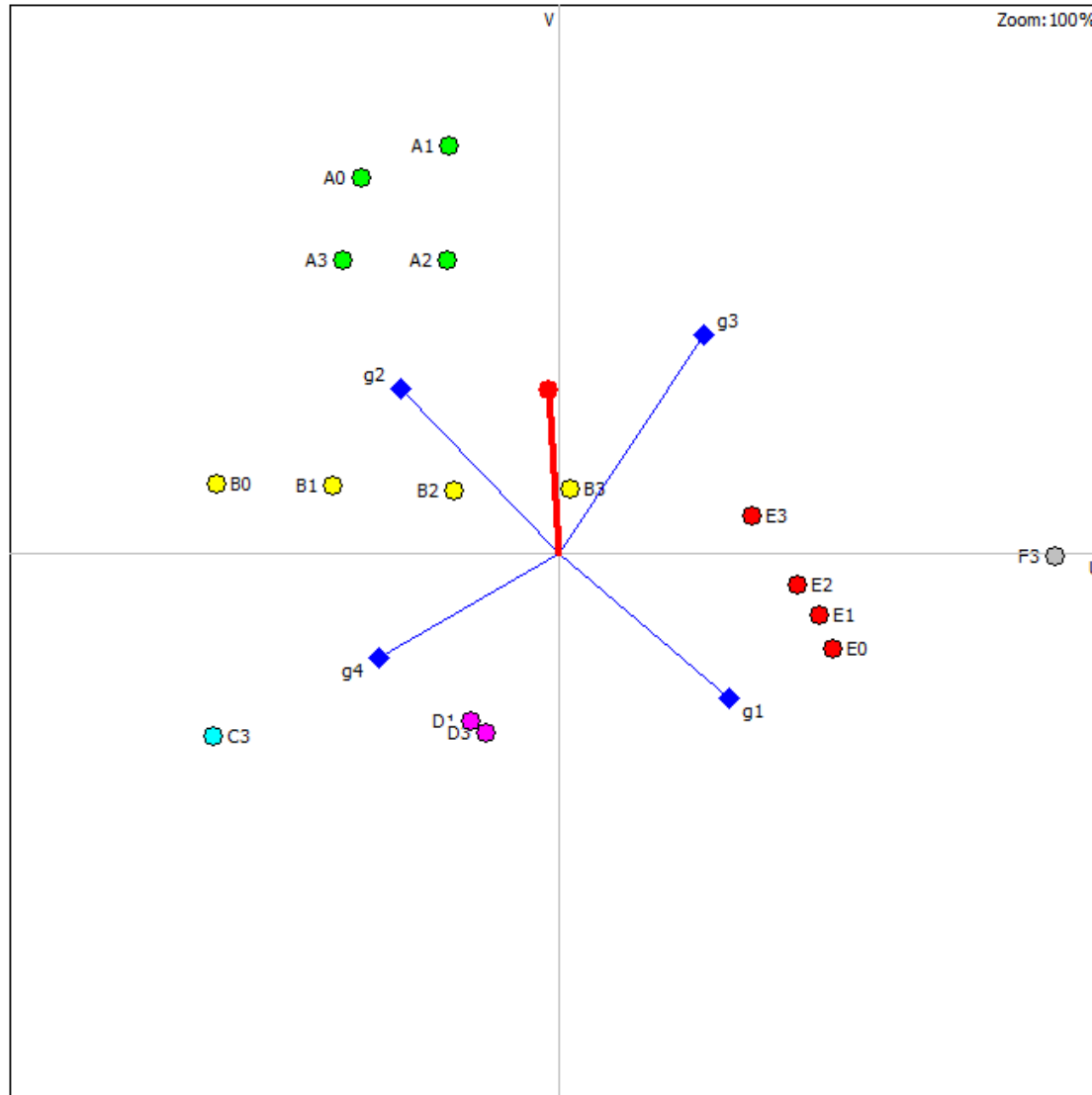


# Dynamic **PROMETHEE** Ranking

## Age-decreasing weights



# Dynamic **GAIA** Analysis



- ▶ Resources:
  - ▶ Blog
  - ▶ **PROMETHEE** Bibliographical Database
  - ▶ Slides
- ▶ FAQ
- ▶ Forum
- ▶ VPSolutions
  - ▶ **Visual PROMETHEE** software
  - ▶ Services
- ▶ LinkedIn Group
- ▶ Twitter



# Visual PROMETHEE

---

- ▶ Available in 9 languages:
  - ▶ EN, FR, ES, IT, DE, NL, SR, PL, HU
- ▶ Full documentation and tutorials
- ▶ Academic Edition
  - ▶ Free for all non-profit research and teaching
- ▶ Business Edition
  - ▶ Unrestricted use
- ▶ Download: **[www.promethee-gaia.net](http://www.promethee-gaia.net)**

# VP Services

---

- ▶ Ask
  - ▶ Audit
  - ▶ Consultancy
- ▶ Learn
  - ▶ Training
  - ▶ Coaching
  - ▶ Course
- ▶ Master
  - ▶ Extended course
  - ▶ Custom coaching
- ▶ **[www.promethee-gaia.net](http://www.promethee-gaia.net)**